

DISTRIBUTION TRANSFORMERS

22 000/420 Volt Three Phase



Approximate Dimensions:

Length: 1 010mm

Width: 905mm

Height: 786mm

Example of the Rating Plate:

ACTOM															
LVD DISTRIBUTION TRANSFORMERS															
KVA	250	VOLTS HV/LV	22000 / 415												
PHASE	3	AMP/RES	0.25 / 978												
IMPEDANCE	400	WINDINGS HV/LV	AL / AL												
FREQUENCY	50 HZ	COOLING	UNFAN												
SERIAL NO.	10001009	YEAR & MONTH OF MANUF.	2018/05												
ORDER NO.	1115997	CORE & WINDING	450												
CUSTOMER	ACTOM ELEC PRODUCTS	TOTAL MASS	146												
SAP No.		CR	247												
<p>MANUFACTURED IN ACCORDANCE WITH FANON SPECIFICATION 34.346 07/16</p> <p>OIL CONTAINS NO TRACE OF PCB'S</p> <p>VENTILATE TANK INTERIOR BEFORE REMOVING WELDING COVER</p> <p>TO REF P18 LFD (INDICIF P18 L VACUUM TERMINAL MARKINGS</p>															
		<table border="1"> <thead> <tr> <th>H.V. %</th> <th>SWITCH POSITION</th> </tr> </thead> <tbody> <tr> <td>106</td> <td>1</td> </tr> <tr> <td>103</td> <td>2</td> </tr> <tr> <td>100</td> <td>3</td> </tr> <tr> <td>97</td> <td>4</td> </tr> <tr> <td>94</td> <td>5</td> </tr> </tbody> </table>		H.V. %	SWITCH POSITION	106	1	103	2	100	3	97	4	94	5
H.V. %	SWITCH POSITION														
106	1														
103	2														
100	3														
97	4														
94	5														
		<p>VECTOR SYMBOL Dyn 11</p>													
SANS 780 27033															

Typical Data:

Transformer For Industrial Applications:
Manufactured and Tested The Design: SANS IEC 613781 standard
 Will ensure that the unit will withstand the typically high electrical stresses
The Large Robust Radiators: Quickly dissipate any heat created by extra losses that are normally caused by "Eddy" currents
Short Circuit Tested to: SANS 780-IEC 60076-5 and Eskom specific 34-346
Customise with Accessories: Please contact us for a Full List of accessories

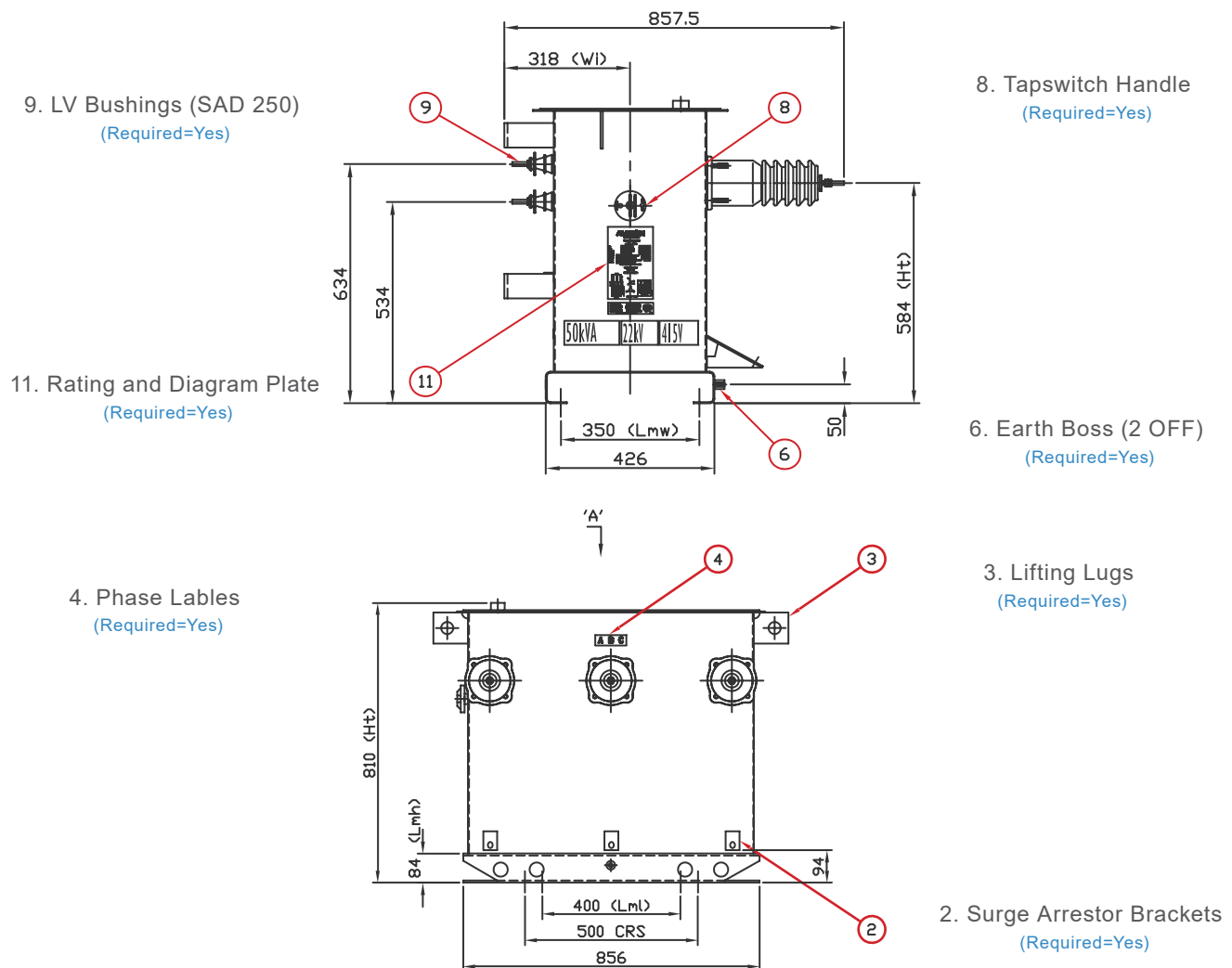
Product Data:

Rating: 50 - 5 000 KVA
Voltage: 415 V
Impedance: 3.6% - 9%
Number of Phases: Three

DISTRIBUTION TRANSFORMERS

22 000/420 Volt Three Phase

General Third Angle Projection (Scale 1:10)



Additional Information:

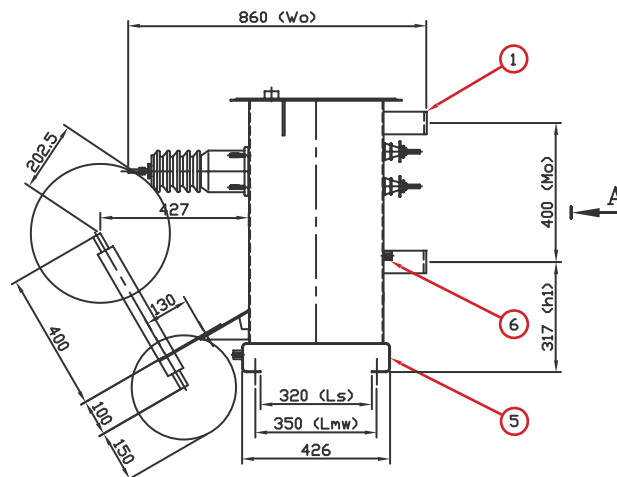
Oil Litres	154	LT
Core & Wind Mass	191	KG
Total Mass	450	KG

1. 8mm Thick Pole Mounting Brackets
2. Threaded Rods, Nuts and Spring Washers supplied
3. LV Bushing Stem is M12
4. Taps to be $\pm 6\%$ & $\pm 3\%$ (Off Circuit)
5. The LV Earth Boss is Directly Below the 'yn' Bushing
6. Lifting Lug Holes \varnothing 35mm
7. Voltage Stated is the Off-Load Voltage

DISTRIBUTION TRANSFORMERS

22 000/420 Volt Three Phase

General Third Angle Projection (Scale 1:10)

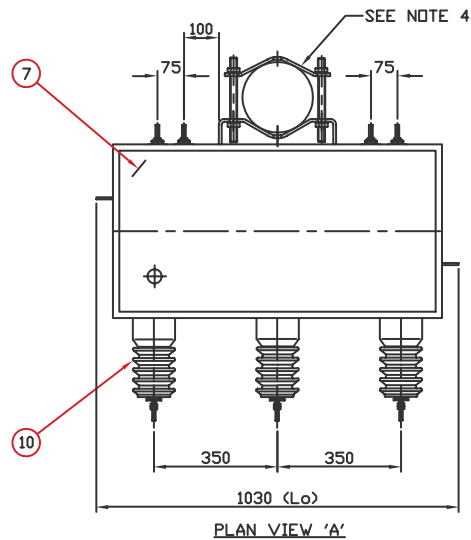


1. Pole Mounting Brackets
(Required=Yes)

6. Earth Boss (2 OFF)
(Required=Yes)

5. Skid Base
(Required=Yes)

7. Welded Cover
(Required=Yes)



10. HV Bushings (SG 120)
(Required=Yes)

Additional Information:

1. 8mm Thick Pole Mounting Brackets
2. Threaded Rods, Nuts and Spring Washers supplied
3. LV Bushing Stem is M12
4. Taps to be $\pm 6\%$ & $\pm 3\%$ (Off Circuit)
5. The LV Earth Boss is Directly Below the 'yn' Bushing
6. Lifting Lug Holes $\varnothing 35\text{mm}$
7. Voltage Stated is the Off-Load Voltage

Oil Litres	154	LT
Core & Wind Mass	191	KG
Total Mass	450	KG

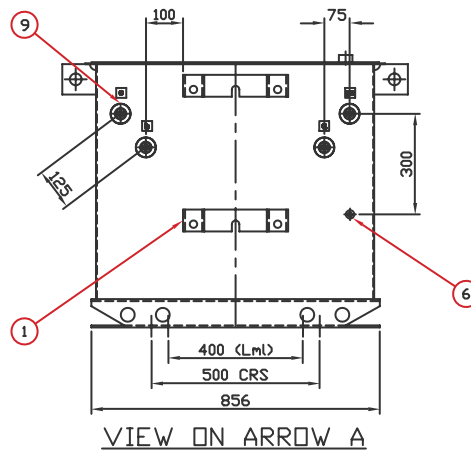
DISTRIBUTION TRANSFORMERS

22 000/420 Volt Three Phase

General Third Angle Projection (Scale 1:10) of 22 000/415 Volt

9. LV Bushings (SAD 250)
(Required=Yes)

1. Pole Mounting Brackets
(Required=Yes)



6. Earth Boss (2 OFF)
(Required=Yes)

Product Information:

Rated Power (kVA)	No Loss Watts	Full Load Loss Watts	Impedance (%)	Length (mm)	Width (mm)	Height (mm)	Oil Volume (Litres)	Total Mass (kg)
25	150	570	3.6	906	905	652	98	340
50	220	1 000	3.5	1 010	905	786	159	475
100	360	1 700	4.5	1 222	958	710	119	590
200	600	2 700	4.5	1 500	1 050	810	296	860
315	840	3 800	4.5	1 685	1 200	831	445	1 420
400	990	4 500	4.5	2 004	1 615	900	495	2 088
500	1 180	5 400	5	1 862	1 200	921	495	1 700
630	1 400	6 400	5	2 513	2 160	1 780	645	2 650
800	1 650	8 000	5	2 513	2 160	1 780	645	2 650
1 000	1 950	9 500	5	2 513	2 160	1 780	645	2 760
1 250	2 300	11 000	5	2 784	2 100	1 840	1 000	3 700
1 600	2 770	13 500	5.75	2 784	2 100	1 840	1 316	4 340
2 000	3 250	16 000	8	2 976	2 100	1 865	1 540	5 150
2 500	3 800	22 800	9	3 146	2 400	1 900	1 800	5 900
3 150	4 500	26 500	9	3 900	2 400	1 900	2 000	6 700
5 000	6 600	37 000	9	3 610	1 715	2 450	3 131	7 900

Address: 4 Branch Road, Germiston 1401, P.O. Box 678, Germiston 1400

Complete your Project:

Please select the items you require and we will be in touch

Cables and Wires:

Indoor
Outdoor
General
Other
Let an ACTOM
Specialist Contact you

Lighting:

Indoor
Outdoor
General
Other
Let an ACTOM
Specialist Contact you

Transformers (Distribution):

Indoor
Outdoor
General
Other
Let an ACTOM
Specialist Contact you

Accessories:

Indoor
Outdoor
General
Other
Let an ACTOM
Specialist Contact you

Specific Information:

Address: 4 Branch Road, Germiston 1401, P.O. Box 678, Germiston 1400

For more Information on this Product Please Send us the Following

Product Information:

Product Name:

Quantity:

Project Name:

Date the Product is required:

Your Contact Information:

Name and Surname:

Company:

Email:

Phone Number:

Province:

Thank You

For having a Look at this Product

Please send this PDF back to us with all your Information

Scan the QR Code to visit our Website:

